

Hidden Powers and Northern Lights Hunt – Winter Escorted Tour



Languages: English

Duration: 6 days/5 nights

Operation: Oct 2023 - Apr 2024

Prices Winter 2023 – 2024, price per person

| Languages | Category | Max group size | Departures | Double | Single | Triple |
|-----------|----------|----------------|---|-----------|-----------|-----------|
| English | Comfort | 36 | 19 October 2023 23 November 2023 01 February 2024 | 1.244 EUR | 1.519 EUR | 1.201 EUR |
| English | Comfort | 36 | 26 March 2024 | 1.287 EUR | 1.567 EUR | 1.267 EUR |
| English | Quality | 36 | 05, 26 October 2023 04 April 2024 | 1.324 EUR | 1.694 EUR | 1.260 EUR |
| English | Quality | 36 | 02, 14 November 2023 07 December 2023 | 1.289 EUR | 1.659 EUR | 1.229 EUR |
| English | Quality | 16 | 12 October 2023 | 1.793 EUR | 2.228 EUR | 1.703 EUR |
| English | Quality | 16 | 16 November 2023 23 January 2024 | 1.627 EUR | 1.996 EUR | 1.564 EUR |
| English | Quality | 16 | 22 February 2024 | 1.713 EUR | 2.147 EUR | 1.623 EUR |

Children rate:

Child 6-11 years sharing a double room with 2 adults will receive a 25% discount from the listed package price. Children 12 years and older pay full price. It is not recommended that children 0-8 years old travel on scheduled tours.

All departures are guaranteed with a minimum of 3 participants unless otherwise stated

Included

- Guided coach tour from day 2 to day 5
- Expert professional English-speaking local guide from day 2 to day 5
- Free Wi-Fi on board the motor coach
- Accommodation 2 nights in a standard room with facilities in Reykjavik
- Accommodation 3 nights in a standard room with facilities in the countryside
- Icelandic breakfast (except arrival day)
- 3 Two-course local-cuisine dinners in the countryside (main course & dessert, coffee/tea (day 2, 3, 4)
- Souvenir Icelandic Search and Rescue keyring
- Entrance fee to the Aurora Reykjavik Northern Lights Centre (day 2)
- Visit to outdoor geothermal bakery and taste of steam-baked rye bread (day 2)
- Entrance fee to the LAVA Centre and LAVA Centre Cinema (day 3)
- Visit to a local horse farm to meet Icelandic horses, plus Icelandic refreshments
- Blue Lagoon admission, including towel rental, silica mud mask and one drink (day 5)
- Use of crampons/cleats (if needed) for walking on snow/ice covered surfaces
- Great photo stops
- Seat rotation during the tour
- Northern lights guided hunt on foot one selected evening, including use of crampons and headlight
- Customer care service during office hours

Added Value:

- Northern Lights “wake-up call” option during the night on days 2-4 (please note: available at most countryside hotels)

Not Included

- Breakfast on arrival day
- International airfare
- Baggage portage at airport/hotel
- Personal travel insurance (highly recommended)
- Swimsuit at the Blue Lagoon (rentals available)
- Round-trip transfers between airports and hotels
- Beverages, snacks, lunches, dinners unless otherwise noted in itinerary
- Early check-in (check-in time for most hotels in Iceland starts between 14:00 and 16:00 (2:00pm and 4:00pm)
- Late check-out
- Any service not specifically listed under “included”

Time of cancellation:

More than 3 weeks (22+ days) prior to arrival deposit which is 20%

3 weeks (21 days) and more than 10 days 50%

10 days and more than 72 hours 75%

72 hours' notice and less 100%



Accommodation - Quality category:

These are quality hotels, guesthouses, and farmhouse accommodation, all with private facilities and breakfast included. In Reykjavik: 4-star hotel. In the Countryside: The most comfortable accommodation available in each area. Most of the groups stay at the following hotels.

Day 1 – Center Hotel Laugavegur

Day 2 – Stracta Hotel

Day 3 – Fosshotel Nupar/Fosshotel Glacier Lagoon/Hotel Klaustur

Day 4 – Fosshotel Nupar/Fosshotel Glacier Lagoon/Hotel Klaustur

Day 5 – Center Hotel Laugavegur

Accommodation- Comfort Category

These are pleasant and economical standard hotels, guesthouses, and farmhouse accommodation, all with private facilities and breakfast included. Generally, 3-star or equivalent both in Reykjavik and the countryside. Most of the groups stay at the following hotels.

Day 1 – Hotel Klettur

Day 2 – Hotel Ork

Day 3 – Fosshotel Nupar/Geirland

Day 4 – Fosshotel Nupar/Geirland

Day 5 – Hotel Klettur

Important

Northern lights are dependent on weather conditions and sightings are not guaranteed

We reserve the right to alter routes without prior notice, due to road conditions

Please advise us at booking time if you have food allergies or dietary preferences

A minimum of 3 passengers is required to guarantee each departure.





Itinerary:

Day 1: Arrival

Arrival at the Keflavik airport. Transfers to Reykjavik are **not included** in the tour. **We would be happy to arrange shared or private transfers for you, so let us know at booking time.**

If you are arriving earlier in the day, you might consider adding a day tour. We'd be happy to make suggestions based on your interests. One of our favorite activities after a long flight is to visit one of the neighborhood geothermal pools. It is so refreshing to relax in the warm water, breathing in the fresh Icelandic air. It is a great way to get to see Icelandic daily life and maybe meet a few locals. It is also nice to take a stroll in the old city center, perhaps visiting one of the museums or relaxing with a cup of coffee in a cozy café.

Dinner this evening is at your leisure. Reykjavik offers a multitude of restaurants and/or coffee-houses, making dinner a great way to get better acquainted with Iceland's capital.

Important: If you have added extra nights in Reykjavík before your tour, the guide will meet your group for the start of the tour on Day 2 according to the standard "Hidden Powers and Northern Lights" itinerary.

Overnight stay in Reykjavik.

Please note that check-in at most hotels starts at 14:00 (2:00pm).



Geysir



Þingvellir



Gullfoss waterfall

Day 2: Thingvellir - Geysir - Gullfoss

Approximate distance: ca 185 km / 115 miles

Northern Lights Centre – National Park with Geological Wonders (UNESCO) – Lively Geysers – The Famous Golden Falls

Start the adventure by visiting the fascinating **Aurora Reykjavik Northern Lights Centre**. You'll get a great introduction to northern lights, how they are formed and the folklore surrounding them. You'll also get tips about how to capture northern lights on film. It's also possible to get assistance from the staff in adjusting your camera's settings for northern lights photos.

Then head onwards to **Thingvellir National Park** (UNESCO World Heritage site) where the world's oldest parliament met for centuries on the shores of Iceland's largest lake. This is a place that makes us Icelanders very proud of our heritage, and your guide will show you some of the amazing sites here. You might even have the rare chance to walk between two continents!

Continue on to the geothermal fields of **Geysir** with bubbling mud pools and the high-spouting Strokkur hot spring. Last but not least, visit the dramatic two-tiered **Gullfoss waterfall**, a spectacular sight in winter when frozen mid-cascade.

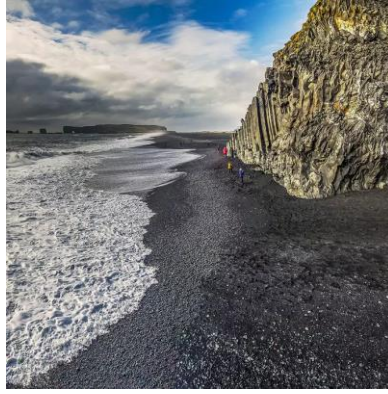
During the day you will also visit the town of **Laugarvatn**. The town is built around three hot springs, and the residents have cleverly harnessed the hot springs for heating, greenhouses and even cooking. You'll visit a unique **outdoor geothermal bakery** where sweet Icelandic rye bread is baked in the hot sands. You'll have the chance to taste some of the freshly baked bread, hot from the ground. It's especially delicious slathered in sweet Icelandic butter.

If weather conditions are right, your guide will take you on a northern lights hunt on foot in the area outside your hotel tonight, or on the evening of Day 3 or 4.

Dinner and overnight in the south coast area.



Seljalandsfoss



Reynisfjara



Skogafoss waterfall

Day 3: Iceland's South Shore

Approximate distance: ca. 200 km / 124 miles

Waterfalls – Lava Centre – Glacial Views – Black Sand Beaches

Breakfast at your hotel. Drive along the **South Shore**, an area of Iceland that is especially beautiful to view in the winter. This is one of the main farm regions of the country, and the road will pass by typical Icelandic farms, often with Icelandic horses roaming in the fields. This part of Iceland is home to the wonderful **LAVA Centre**, an interactive, high-tech educational exhibition depicting volcanic activity, earthquakes and the creation of Iceland over millions of years. Enjoy both the exhibit and viewing an interesting film about Icelandic volcanoes at the Centre's cinema. Continue onwards. If the skies are clear you might see the area's two most famous volcanoes in the distance: Mount Hekla (last eruption 2000) and Eyjafjallajokull (last eruption 2010). You might also possibly catch a glimpse of Westman Islands archipelago off the coast of Iceland.

Stop at the spectacular waterfalls **Seljalandsfoss** and **Skogafoss**. If trail conditions are right, you might be able to walk behind the ribbon-like Seljalandsfoss falls. Skogafoss is a beautifully shaped waterfall that makes a perfect backdrop for a selfie. It has an interesting history geologically, and it just may also be hiding some buried treasure from the Middle Ages.

Head onwards, passing Myrdalsjokull Glacier, to visit **Reynisfjara beach**. Take a walk on the black sands, admiring the extraordinary rock formations and thundering waves of the Atlantic Ocean. Cross Eldhraun, a vast lava field created from a very destructive 18th-century eruption as you head into Southeast Iceland. The snows of winter make this landscape into something very mysterious.

Dinner and overnight stay in the Kirkjubaejarklaustur area.



Glacier lagoon Jökulsárlón



Diamond beach

Day 4: Vatnajökull National Park - Jokulsarlon Glacial Lagoon

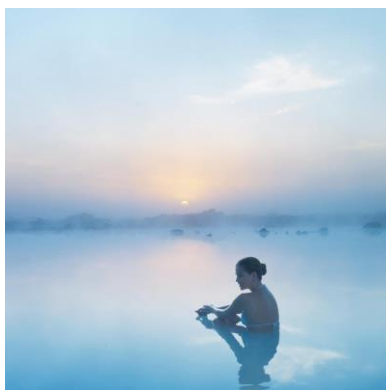
Approximate distance: ca. 209 km / 130 miles

Glacial Lagoon with Icebergs – Europe’s Largest Glacier

Breakfast at your hotel. Today you will be in a world of glaciers! You’ll be visiting the southern area of **Vatnajökull National Park**, named after Europe’s largest glacier. The total park area covers almost 14% of Iceland, making it the largest national park in Western Europe! Drive through vast sand plains created by glacial outwashes as you head east. Visit **Jokulsarlon Glacier Lagoon** where you can enjoy the breath-taking sight of icebergs floating in the fantastic 180m (591 ft.) deep glacial lagoon (make sure that camera is loaded and ready!) Nearby is the dramatic beauty of the **Diamond Beach**, where shrinking icebergs settle on the black sands before they drift out to sea.

Visit the national park’s famous Skaftafell area, a site of outstanding natural beauty dominated by several magnificent glaciers.

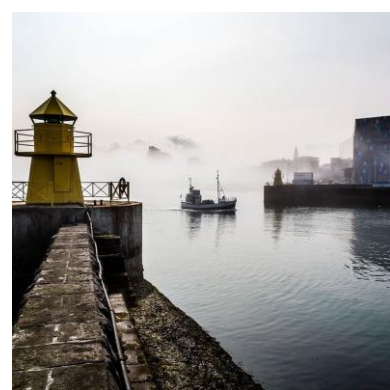
After an amazing day, return to the hotel for dinner and overnight.



The Blue lagoon



Hallgrimskirkja church in Reykjavik & harbour



Day 5: Hveragerdi - Blue Lagoon - Reykjavik

Approximate distance: ca. 365 km / 227 miles

Greenhouse Village – Icelandic Horses - Thundering Waves – Geothermal Lagoon

Breakfast at your hotel. Head back along the beautiful South Coast, enjoying a different view of the winter landscapes. Visit the village of Hveragerdi, which is one of the few sites in the world located directly in the middle of a geothermal area. Hveragerdi is often called “The Flower Village” because of its many flower greenhouses heated by hot water from nearby springs.

Today you’ll visit a horse farm to meet some locals: Icelandic horses. Known as the Icelanders’ most faithful friend and servant, this Viking horse breed played a pivotal role in Icelandic history. Enjoy petting these friendly horses and snapping a few selfies with them. You’ll also taste some sweet refreshments that are traditionally served on Icelandic farms.

Turn onto a southern coastal road and follow alongside the shoreline with its breath-taking sea waves, passing through a deserted community that once was a flourishing center for the region.

The trip then takes you through the surreal landscapes of the Reykjanes peninsula, where you can enjoy a dip in the famous **Blue Lagoon**, a unique wonder of nature with pleasantly warm, mineral-rich water in the middle of a black lava field. Return to Reykjavik, where the evening open for you to enjoy your own activities

Overnight in Reykjavik. Dinner is on your own.

Day 6: Departure

Breakfast at your hotel. Please note that this might be a light breakfast if you are taking an early morning departure flight. Transfer **on your own** to the international airport for your departure flight. **The airport transfer is not included, but we are happy to help you arrange shared or private transfers.**

We recommend you depart your hotel no later than three hours before your departure flight. We wish you a pleasant trip back to your homeland and hope to see you in Iceland again!

